



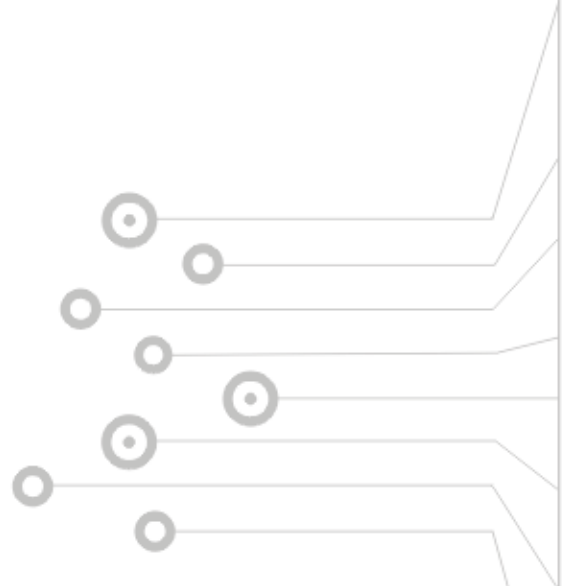
KL 系列

KL Series

KLS 系列

KLL 系列

KLM 系列



● 认证事项 ●
Certification





KLSAP1



KLSAP2



KLSAL1



10

KLSAL2



KLSAL4



KLSAL3



KLLAP1



KLLAP2



KLLAL1





KLLAL2



KLLAL4



KLLAL3



KLMAP1



KLMAP2



KLMAL1



KLMAL2



KLMAL4



KLMAL3



■ 动作特性 (KL 系列) Operating Characteristics

特性 \ 规格	AP1	AP2	AL1	AL2	AL3	AL4
OF	2,720g	2,720g	700g	1,360g	1,360g	142g
RF	910g	910g	170g	227g	227g	28g
PT	1.7mm	1.7mm	4.5mm	20° ±5	20° ±5	20° ±5
OT	6.4mm	5.6mm	6.4mm	40°	40°	40°
MD	1.0mm	1.0mm	1.0mm	12°	12°	12°
TTP	-	-	-	2,720g	200g	200g

■ 触点部位 Contact

触点结构 Contact Arrangement		1a+1b				
触点材质 Contact Material		银合金 Ag Alloy				
绝缘电阻 Insulation Resistance		100MΩ 500VDC				
接触电阻 Contact Resistance		50mΩ 以下				
		常开NO		常闭NC		
额定负载 Rated Load, Resistive	阻性 Non- Inductive Load	阻性负载 Resistance Load	10A 125VAC	10A 8VDC	10A 125VAC	10A 8VDC
			10A 250VAC	6A 30VDC	10A 250VAC	6A 30VDC
			1A 600VAC	0.8A 125VDC	3A 600VAC	0.8A 125VDC
		灯负载 Lamp Load	1.5A 125VAC	3A 8VDC	3A 125VAC	6A 8VDC
			1A 250VAC	3A 30VDC	2A 250VAC	4A 30VDC
			0.5A 600VAC	0.2A 125VDC	1A 600VAC	0.2A 125VDC
	感性 Inductive Load	马达负载 Motor Load	6A 125VAC	10A 8VDC	6A 125VAC	10A 8VDC
			4A 250VAC	6A 30VDC	4A 250VAC	6A 30VDC
			1.5A 600VAC	0.8A 125VDC	1.5A 600VAC	0.8A 125VDC
		感性负载 Inductive Load	2.5A 125VAC	6A 8VDC	5A 125VAC	6A 8VDC
			1.5A 250VAC	4A 30VDC	3A 250VAC	4A 30VDC
			0.5A 600VAC	0.2A 125VDC	1A 600VAC	0.2A 125VDC
最大浪涌电流 Max. Carry Current		15A		30A		

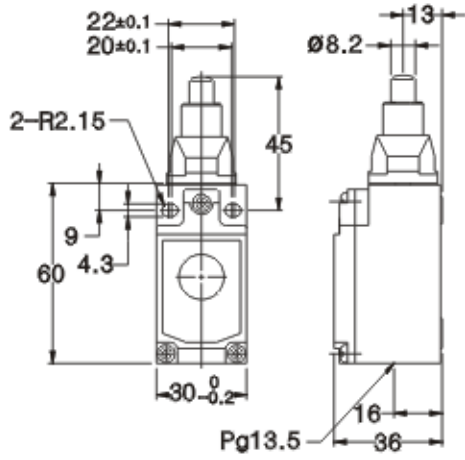
- 以上数据为正常电流。
- 感性负载为功率因素0.4以下(交流), 时间常数7ms以下(直流)。
- 灯负载上产生10倍的浪涌电流, 马达负载上产生6倍的浪涌电流。

■ 一般性能 General Specification

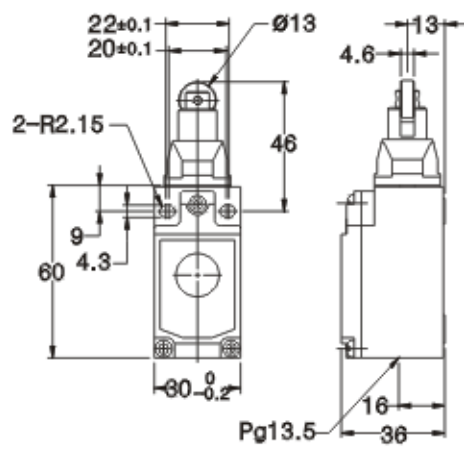
操作许可速度 Operating Speed		0.01mm/sec~0.5m/sec
操作许可频率 Operating Frequency	电气 Electrical	30次/分
	机械 Mechanical	120次/分
介质耐压 Dielectric Strength	各级端子间 Non-Continuous Terminals	1,000VAC 1分钟
	充电金属部和各端子间 Terminal & Earth	2,000VAC 1分钟
	各端子和非充电金属部位间 Terminal & Non-Charged Metal Part	2,000VAC 1分钟
耐振动 Dielectric Strength		10Hz~55Hz 双振幅1.5mm
冲击 Shock	耐受 Mechanical Durability	最大100G
	误动作 Malfunction Durability	(柱塞按钮型)最大30G (手柄型)最大20G
寿命 Expected Life	机械 Mechanical	1,000万次
	电气 Electrical	50万次
环境温度 Ambient Temperature		-25℃~80℃(无凝露、无结冰)
环境湿度 Ambient Humidity		35%~85% RH
安装螺丝扭矩 Torque		0.8N·m(8.16kgf·cm)

※ 如因提高质量进行产品更改, 恕不另行通知。
All right reserved. Specification subject to change without notice.

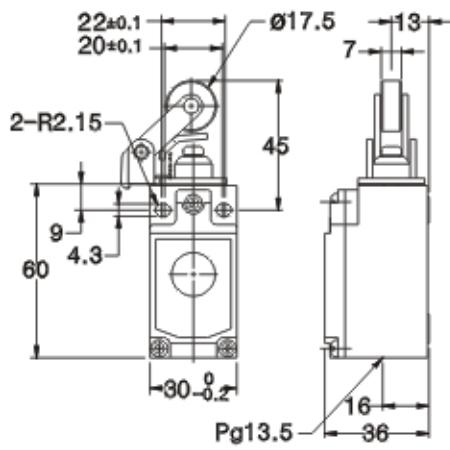
KLSAP1



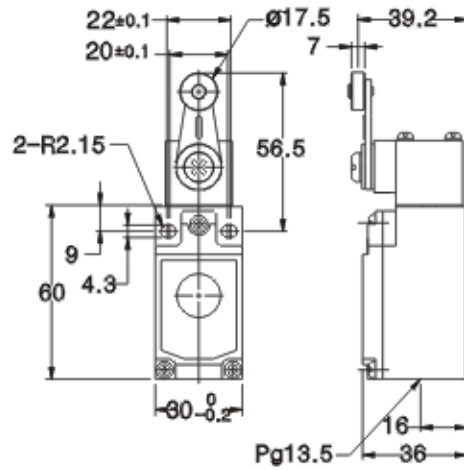
KLSAP2



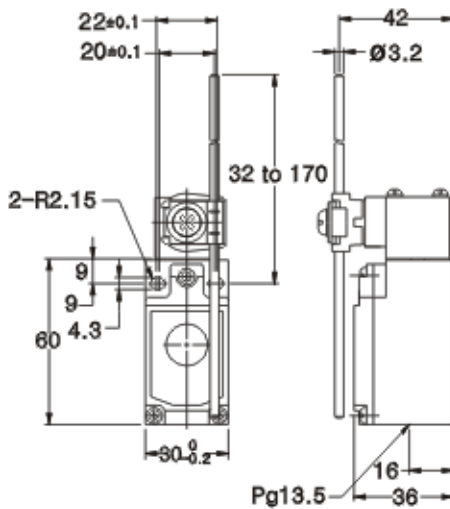
KLSAL1



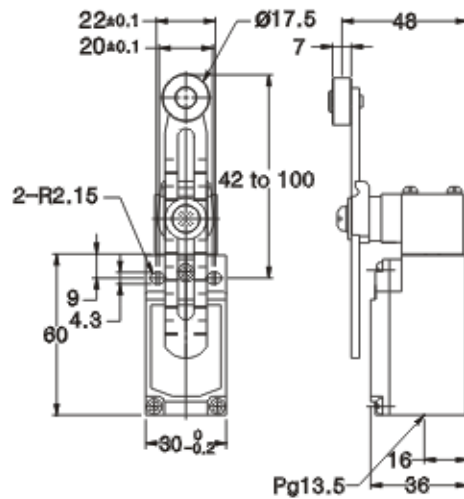
KLSAL2



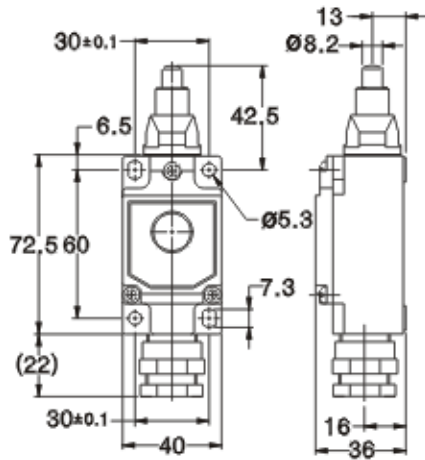
KLSAL4



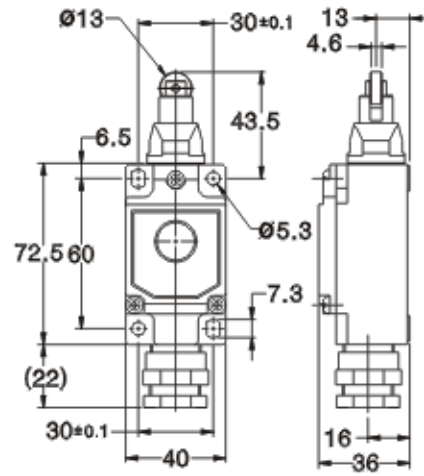
KLSAL3



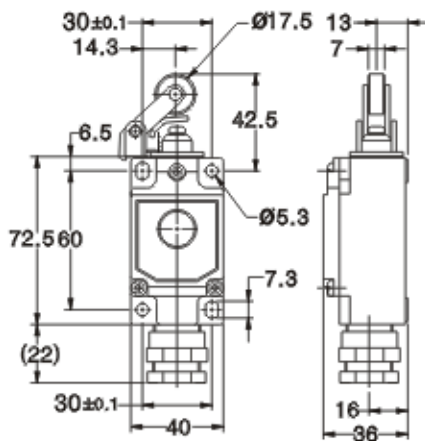
KLLAP1



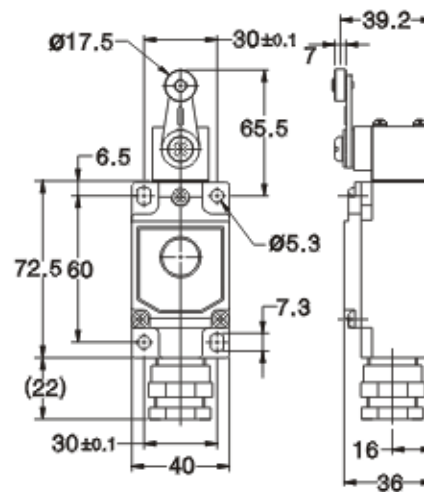
KLLAP2



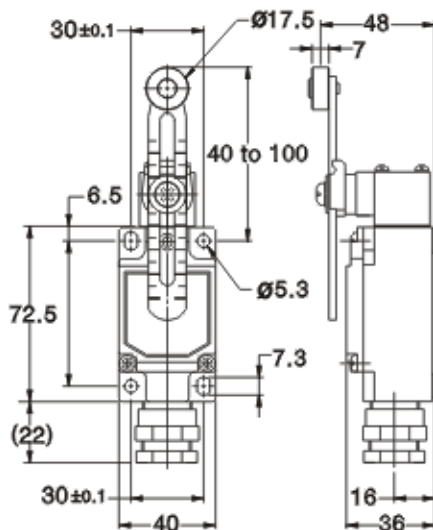
KLLAL1



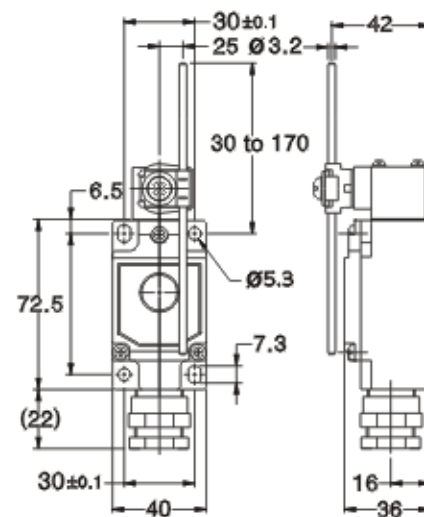
KLLAL2



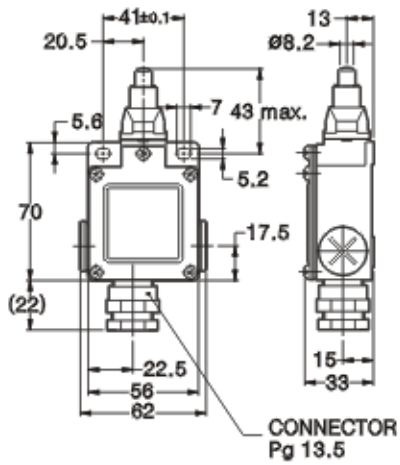
KLLAL3



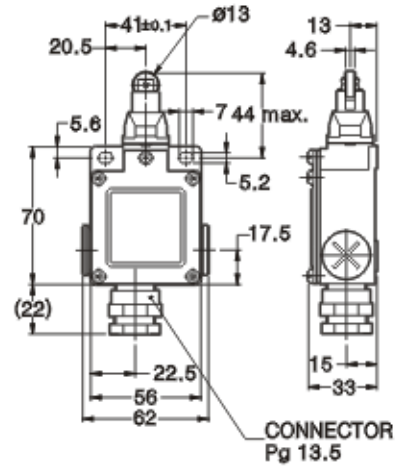
KLLAL4



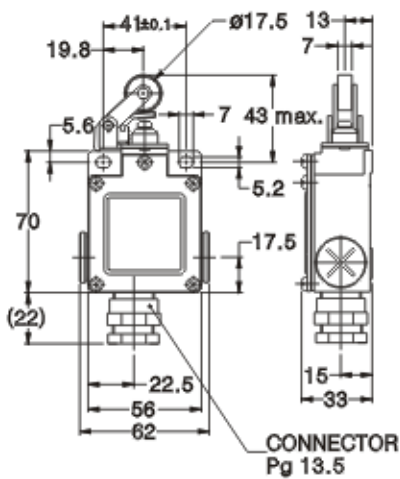
KLMAP1



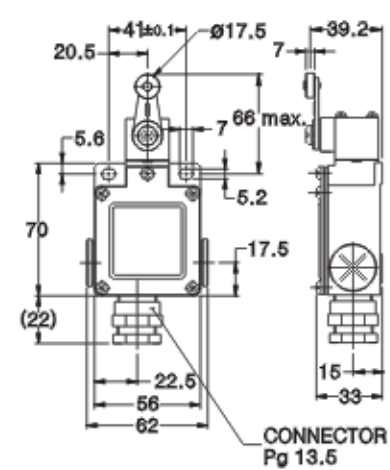
KLMAP2



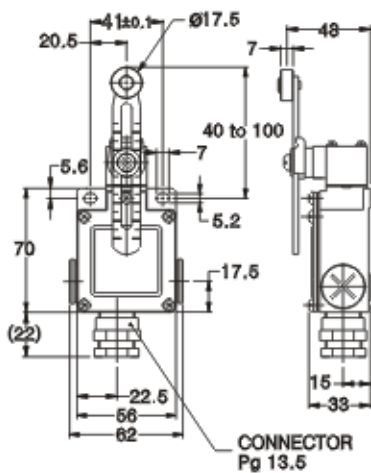
KLMAL1



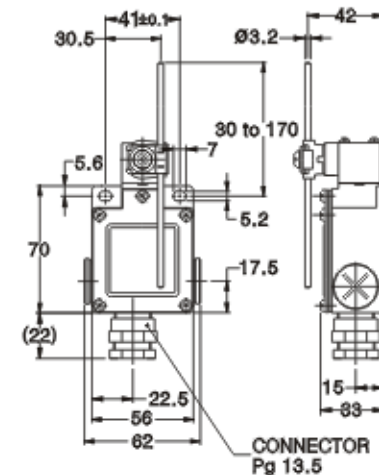
KLMAL2



KLMAL3

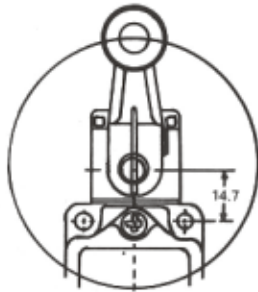


KLMAL4



■ 使用方法 Adjusting Method

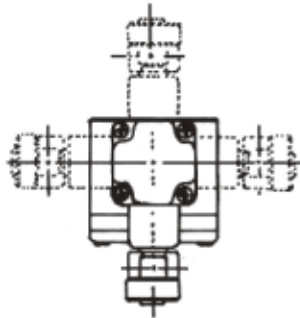
◎ 手柄滚轮型动作角度调整方法



手柄旁边的螺丝拧开后
调所需角度

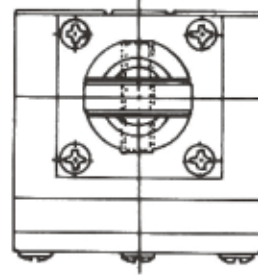
◎ 方向选择方法

手柄滚轮形

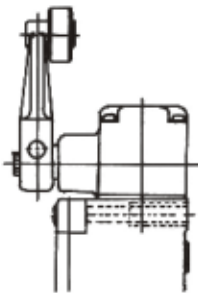


拧开4个螺丝，调整所需方向，再组装；
要注意方向

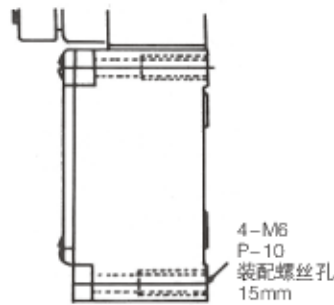
柱塞滚轮形



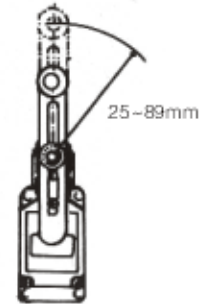
◎ 前面安装方法



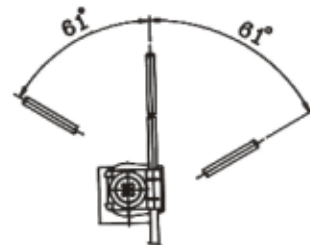
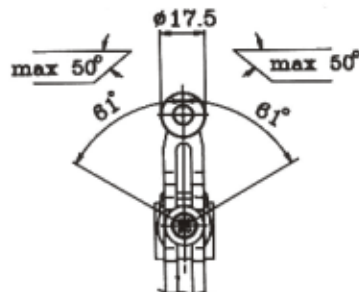
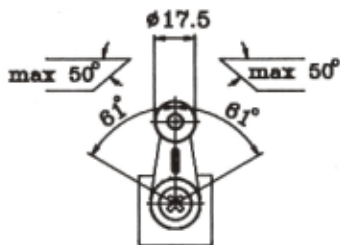
◎ 后面安装方法



◎ 调整推杆调整方法



◎ 推杆形T.T.P



■ 安装孔加工图 Panel Mounting Dimension

